



D E E R N E S S
F E N C I N G
& L A N D S C A P I N G





OUR EXPERTISE...

GROUNDS MAINTENANCE

SECURITY

SCHOOLS

MULTI USE GAMES ARENAS

AGRICULTURAL

RESIDENTIAL

ORNAMENTAL & SPECIALIST

PROJECTS





OUR STORY...

“WE HAVE A DEDICATED CUSTOMER CARE SERVICE; THE FIRST OF ITS KIND TO BE SET UP IN THE FENCING & LANDSCAPING INDUSTRY, READY TO RESPOND TO OUR CLIENT’S NEEDS.”

Deerness Fencing & Landscaping is one of the largest fencing & landscaping contractors operating in the North East of England. The company has been re-branded after a recent merger between sister companies Deerness Fencing & Sones Landscaping.

Deerness Fencing was formed in 1976 by Michael Hogan, John Duffy and James Duffy and was based in Esh Winning, County Durham. Over the years the company grew organically, secured many key contracts and built up its workforce. With a credible background in timber & fencing, Bob Wall joined the company in 1996, was made Managing Director in 1999, and has since been made Managing Director of Deerness Fencing & Landscaping.

Sones Landscaping was formed in 1972 by Bill Sones. Over the years the company worked on some prestigious North East sites including the landscaping construction at the Metro Centre and Newcastle Business Park; contracts that we still hold today. It was in 1999 that Sones Landscaping became part of Esh Group; adding strength to the group’s competencies and capabilities.

Deerness Fencing & Landscaping places the highest value on establishing and maintaining close working relationships with its clients. Projects and contracts range in size from one off individual properties to long term formal partnering

arrangements with clients across all sectors. Hard working, customer care and loyalty of employees have been the main reasons for the company’s growth. We pride ourselves on having long term relationships with many clients. In 2003, the company introduced a dedicated Customer Care Service, a first of its kind in the fencing & landscaping industry. A dedicated van is on the road at all times ready to respond to our client’s needs.

We have built up a range of skills and experience that are demonstrated on a daily basis through the services that we deliver, the solutions we provide and the expectations that we surpass. We work to very high standards and possess all the accreditations and standards that you would expect of a highly respected company. Within the industry we are full members of BALI (British Association of Landscape Industries) and have in 2007 been nationally recognised in the National BALI Landscape Awards for two of our schemes.

Deerness Fencing & Landscaping is part of Esh Group; a group that turns over in excess of £150 million, employing over 1000 people. As a group, we see construction as a dynamic, exciting and rewarding industry and are passionate about continuing to progress and develop.

OUR CULTURE...

ENVIRONMENT

Sustainability is a major focus for today's companies; not least to those involved in construction that have a lasting effect on the world in which we live. Being acutely aware of our impact upon the environment we act to minimise any negative effects of our activity and always seek to make full use of sustainable materials and methods. Our systems and procedures are maintained to comply with and are accredited to ISO 14001:2004. Within Esh Group, we have formed a joint venture with Aggregate Industries, in Bardon Esh, that recycles construction waste and we have established facilities at our satellite offices to separate waste materials for recycling.



OUR STAFF

People are at the heart of our business and are crucial to the delivery of the company's promises. Valuing and harbouring the right people has enabled us to achieve the 'Investors In People' status in 2005.



QUALITY

Quality and continuous improvement in all areas of service delivery are central to the company ethos and are reflected in all operational areas. The company has gained compliance and accreditation to ISO 9001:2000. All employees recognise their role and responsibility in maintaining quality levels and driving continual improvement.



OUR SUPPLY CHAIN

Deerness Fencing & Landscaping is committed to developing relationships with both clients and suppliers up and down the supply chain. The company has preferred relationships with a number of key suppliers for goods and services, which are continuously reviewed. We strongly believe in the principles of partnering and understand that the benefits to all parties cannot be realised without the support of a well managed supply chain.



TRAINING

Training is very important to us. We seek to empower individuals in order that they work confidently to support our corporate aims. We have and will continue to invest heavily in training our employees. Every Deerness Fencing & Landscaping site based employee holds a valid CSCS card. New staff are immediately enrolled in our training programme to ensure we maintain our 100% status. The NVQ Fencing is the first and only recognised qualification for our sector. All fencing operatives hold this qualification or are currently working towards it.

HEALTH & SAFETY

Deerness Fencing & Landscaping is constantly seeking to ensure that the best Health and Safety conditions exist across all of our sites. We operate a safety conscious culture placing great importance on respecting and adhering to our Health & Safety procedures. By consequence, we have a strong safety record. The Company Health & Safety Policy is constantly reviewed and updated to meet legislative changes and developments. We are supported by a team of Group Health & Safety Advisors that ensures standards are maintained and offers guidance when necessary. Specific Health & Safety training is delivered to employees both in the classroom setting and in the workplace using external and in-house personnel.



REGIONAL OFFICES



OPERATIONAL DEPOTS



OPERATIONAL AREAS





DURHAM COUNTY COUNCIL

We currently provide two Grounds Maintenance Contracts to Durham County Council, within the districts of Wear Valley and Derwentside, for whom we have worked together for many years. Working with both clients in separate partnering agreements, we developed the requirements of the service delivery through regular close consultation. The service includes the provision of grass cutting to recreation areas, public spaces, bowling greens and highways.



CITY IN BLOOM WINNER

UNIVERSITY OF SUNDERLAND

Since 1994, we have provided a full Grounds Maintenance Service, including grass cutting, litter picking, planting of flower beds, pruning and tree surgery over various University owned sites throughout Sunderland. Forming a good working relationship with the University and providing a high quality service has played an integral part in securing this contract year after year. This site has also been commended with a City in Bloom Award.



BOUYGUES TRAVAUX PUBLICS

The project required a mix of timber hoarding and heras mesh fencing, to provide a complete site screening to road infrastructures. Heras mesh panels were used where visual access was important at the internal haul road crossing points.



HIGH FORCE RESEARCH

The project involved the installation of a chain link system surrounding the factory unit. The fencing was topped with barbed wire to increase security effect, helping to alleviate vandal damage. Concrete posts were used to increase durability and the stability of the fence. Large double leaf gates were installed at the front of the entrance to allow large vehicular access, and a single leaf gate was installed at the side of the building to allow pedestrian access. This fencing system is an established effective security system.



Cemetery maintenance and burial services are also an important and sensitive element of the service. In addition, we carry out various hard and soft landscaping works, tree surgery, play equipment inspection and maintenance works are routinely carried out.



BRITAIN IN BLOOM WINNER

DOXFORD BUSINESS PARK

We established and are now responsible for the continued maintenance of planting and associated features of Doxford Business Park. The high quality finishes demanded by the businesses based on this site are required to be complementary to the image profiles of these identity conscious companies, many of whom operate on a global scale. Companies such as Nike and Barclays are very brand aware and insist upon the highest standards at all times. We operate a full grounds maintenance service to grassed areas, shrub beds and flower beds and in winter we also operate a snow clearing and gritting programme. This site has also been commended with a Britain in Bloom Award.



Another requirement of the project was to provide site security whilst offering sound protection (acoustic benefits) and deny visual access. The solution was to be cost effective based on a four year requirement. This was achieved by design using untreated timber post and rails lined both sides with visqueen and filled with rock wool insulation. Cladding was then added to both sides using plywood sheathing finished with cover laths and capping strips.



FREEDOM

The project involved the installation of a high quality fencing solution at Manor House, Penshaw. The fencing comprised of a combination of a high vertical bar self levelling panel system, which provided an aesthetically pleasing security solution. We installed gates and an access system which was designed to match the new fencing, which consisted of standard double and single leaf gates. In order to create a practical and security conscious solution the specialist cantilever single leaf gate had an automated system which provided induction loops, personnel readers and a safety transmission system.



HETTON LYONS PRIMARY SCHOOL

The project was part of a new build scheme involving Hetton Lyons Primary School, Sunderland, working on behalf of principal contractor Lumsden & Carroll Construction. As part of the project we installed a front boundary and entrance comprising of a galvanized and powder coated vertical bar fence. In addition, we installed double leaf main entrance gates incorporating the school's name, with pedestrian access gates to the side.



RICHARD AVENUE PRIMARY SCHOOL

We have carried out numerous projects with Richard Avenue Primary School over the last few years. Particular schemes include the creation of a new garden area and allotment. All existing flag stones were removed and the ground excavated. We then laid new paving as well as a wet pour rubber surface to a new path. In addition we also installed bespoke furniture together with a bridge over a dry stream.



WEAR VALLEY DISTRICT COUNCIL

The project involved the supply and installation of a Multi Use Games Arena at South Church, Bishop Auckland. The 'Phencourt Ball Court System' incorporated basketball nets and backboard over specified goal cut areas. This system comprised of two different heights of fence, offering a higher level fence line at either end of the arena to act as a perfect rebound fence for ball sports.



BRANKSOME SCHOOL

The project involved the installation of a MUGA comprising of mesh panels which offered strong durable protection. The panels were made of galvanised steel and were finished in a powder coated green. The posts were constructed from rectangular hollow sections with tamper resistance fasteners to minimise vandal damage, and then set in the ground with concrete foundations to ensure the very best stability. The pitch is located near the school and the high level fencing offers excellent protection from balls during various sports.



As part of the project we also developed a wildlife habitat pond. The existing area was cleared and excavated, and then the land was formed and shaped to create the pond. A pond observation deck made from yellow pine was installed along with a safety fence around the perimeter of the pond to ensure public safety. A stone path was laid to gain clear access to the new observation deck, as well as the planting of shrubs and trees, and laying of various decorative boulders.



As well as the garden area, we installed an allotment which is used by the school's Gardening Club. The allotment area consists of four raised planting boxes, which can be used to grow vegetables and herbs, complete with a secure perimeter fence.



WHINFIELD SCHOOL

The project involved the installation of an 'Olympis' Multi Use Games Arena ball court surround system fencing. The fencing was made using galvanised steel mesh panels which offer strong durable protection, finished in a powder coated green. The joints were resistance welded to create strong welds and increase corrosion resistance. The posts were constructed from rectangular hollow section with tamper resistance fasteners to minimise vandal damage, and then set in the ground with concrete foundations to ensure the very best stability. This system included a single and double leafed gates for access, with a specialist feature of a secure exit only gate allowing a clear exit to anyone who may be in the arena once the main gates have been locked.



DODMIRE SCHOOL

The project involved the installation of an 'Olympis' Multi Use Games Arena ball court surround system fencing. The fencing was made using galvanised steel mesh panels which offer strong durable protection, finished in a powder coated green. The joints were resistance welded to create strong welds and increase corrosion resistance. The posts were constructed from rectangular hollow section with tamper resistance fasteners to minimise vandal damage, and then set in the ground with concrete foundations to ensure the very best stability. This system comprised of two different heights of fence, offering a higher level fence line at either end of the arena to act as a perfect rebound fence for ball sports.

SCHOOLS

MULTI USE GAMES ARENAS



NORTH EAST COMMUNITY FORESTS

The project required the removal and disposal of an existing fencing, and replacing with peeled and treated round posts, strainers and struts with barb wire attached. It was important to maintain stock and public access to the site so this was arranged by installing a series of timber field gates and pedestrian timber kissing gates.



RAINTON CONSTRUCTION

The project involved an attractive and stock proof solution for a private development at Broom House, Sherburn. The fencing comprised of post and horizontal rail, with a railed diamond inset.



GLADEDALE HOMES

Working on multiple new build sites we have worked with Gladedale Homes for many years. Works regularly comprise of the supply and erection of timber panel fencing required for plot divisions, boundaries and garden enclosures.



DUNELM HOMES

Working on multiple new build sites we have worked with Dunelm Homes for many years. Works regularly comprise of plot works, turfing garden areas, planting trees and shrub beds, as well as offering a 12 month maintenance period.



GLADEDALE

The project involved the installation of a 'Tree Belt' along two exposed faces of a new housing estate in order to provide tree and shrub protection against stock and rabbits. This was done by installing a post and three rail fence, which was clad with a heavy duty stock net stapled to the rails. We then overlaid with a rabbit net clip to the stock net which was also buried to prevent any rabbits burrowing.



EWE CENTRE

We were contacted by the EWE Centre, which is based inside a local primary school at Esh Winning, Durham to see if we could donate a length of fencing to complete a sheep enclosure that they had created. The project comprised of the supply and installation of a post and wire stock fencing to the edge of a field which ran alongside a main road. The EWE Centre is dedicated to raising standards through environmental and sustainable development education, which is why we decided to donate to this project.



CROSBY HOMES

The project involved creating a quality mature formal garden for a Crosby Homes Marketing Suite. Working with Crosby Homes we developed a design and specification which involved the planting of shrubs, small trees, turfing garden areas as well as an agreed weekly maintenance period.



WIMPEY HOMES

Working on multiple new build sites we have worked with Wimpey Homes for many years. Works regularly comprise of the supply and erection of timber panel fencing required for plot divisions, boundaries and garden enclosures. This specific project at Devonshire Court, Darlington, involved the installation of a high timber reflective sound screen on steel posts. This fencing system, which ran parallel to the A1 (M) motorway, uses acoustics to create a road traffic noise reducing device.

AGRICULTURAL

RESIDENTIAL



DERE STREET HOMES

The project involved the supply and installation of romantically designed Romeo and Juliet balcony screens to the ground, first and second floor development. The balcony screens were used on the double door outlets to offer safety and security, in particular for those above ground level but they also offered an ornamental feature to the picturesque building set in the estate. Wall top steel fencing panels, finished in a galvanised and painted finish, were installed at the gate house to the entrance of the estate.



STEPHEN EASTEN BUILDING

The project involved the removal of a redundant timber fence, and replacing it with a high vertical steel bar fence, along with a series of wall top panels and gates to match at Orpington Avenue, Newcastle. We also installed access gates which were galvanised and finished with black paint.



BALI AWARD WINNER 2007

RAINTON BRIDGE BUSINESS PARK

The project was part of the construction of Rainton Bridge Business Park, Houghton-le-Spring, working for principle contractor Bowmer & Kirkland. The development consisted of a high quality office accommodation where we created a unique courtyard as a central focus for the development. A range of works took place to create this stunning outdoor area, which included creating ponds and wild flower areas.



BALI AWARD WINNER

ST. BENEDICTS HOSPICE

The project involved the restoration of a garden area in order to create a more accessible and therapeutic environment for patients and their families. The existing long narrow garden had become overgrown and unwelcoming. The lack of paved areas in some parts of the garden had also made the area unsafe or unusable for people in wheelchairs. All existing paving was removed and the ground excavated. Disabled access was heavily considered in the new design.



In addition, we installed specialist ornate steel gates which included full electronic control for automated access and exit. The gates were also designed to match the wall top steel ornate fencing around the estate.



LUMSDEN & CARROLL CONSTRUCTION

The project involved the supply and installation of an ornamental and firework fence at Horsley Hill, South Shields. The fence incorporated a unique waved panel design which was then stepped and installed into the ground. Working closely with the main contractor, Lumsden & Carroll Construction, we ensured that the design brief was achieved to the specific deadline whilst working in a collaborative manner.



It was also essential to make the courtyard practical, therefore seating, decking, bollards and pergolas were incorporated into the design. We also installed a high mesh panel security fence, which incorporated an automated secure turnstile accessed via personnel security cards.



The layout of the new garden comprised of a semi-formal courtyard garden with triangular raised beds and a pergola. Beyond this area we created Japanese garden including a bold water feature of incorporating standing stones and boulders.

ORNAMENTAL & SPECIALIST

PROJECTS



MIDDLESBROUGH INSTITUTE OF MODERN ART

MIMA is a bold new gallery of modern and contemporary art designed by Erik van Egeraat Associated Architects. The £14.2m landmark is located in the heart of Middlesbrough and surrounded by a £5m public square. We were involved in the installation of innovative steel walkways and large areas of lawn.



SAGE MUSIC CENTRE

The Sage Music Centre is a stunning new addition to the development of Gateshead Quayside. The most prominent feature of this fantastic soft landscaping development involved laying lengths of turf on a constructed stepped amphitheatre, creating a clearly defined sharp profile on each step. We also carried out tree planting to the grounds of the centre complimenting the existing planting. The project was carried out to the highest standard to a tight schedule to facilitate the opening of this new prestigious development.



LINGFIELD POINT

The project involved the placing of topsoil and planting of mature boxed lime trees in a continuous curved planter with underground guying and irrigation system at Lingfield Point, Darlington. The planter was then topped off with a layer of white pebbles. Three other trees were planted in stainless steel circular planters and a small area of turf was also laid. To one side of the main site, an existing embankment was top soiled and planted with a variety of shrubs and hedging. The works were completed on time and to budget creating an immediate impact in an existing industrial environment.

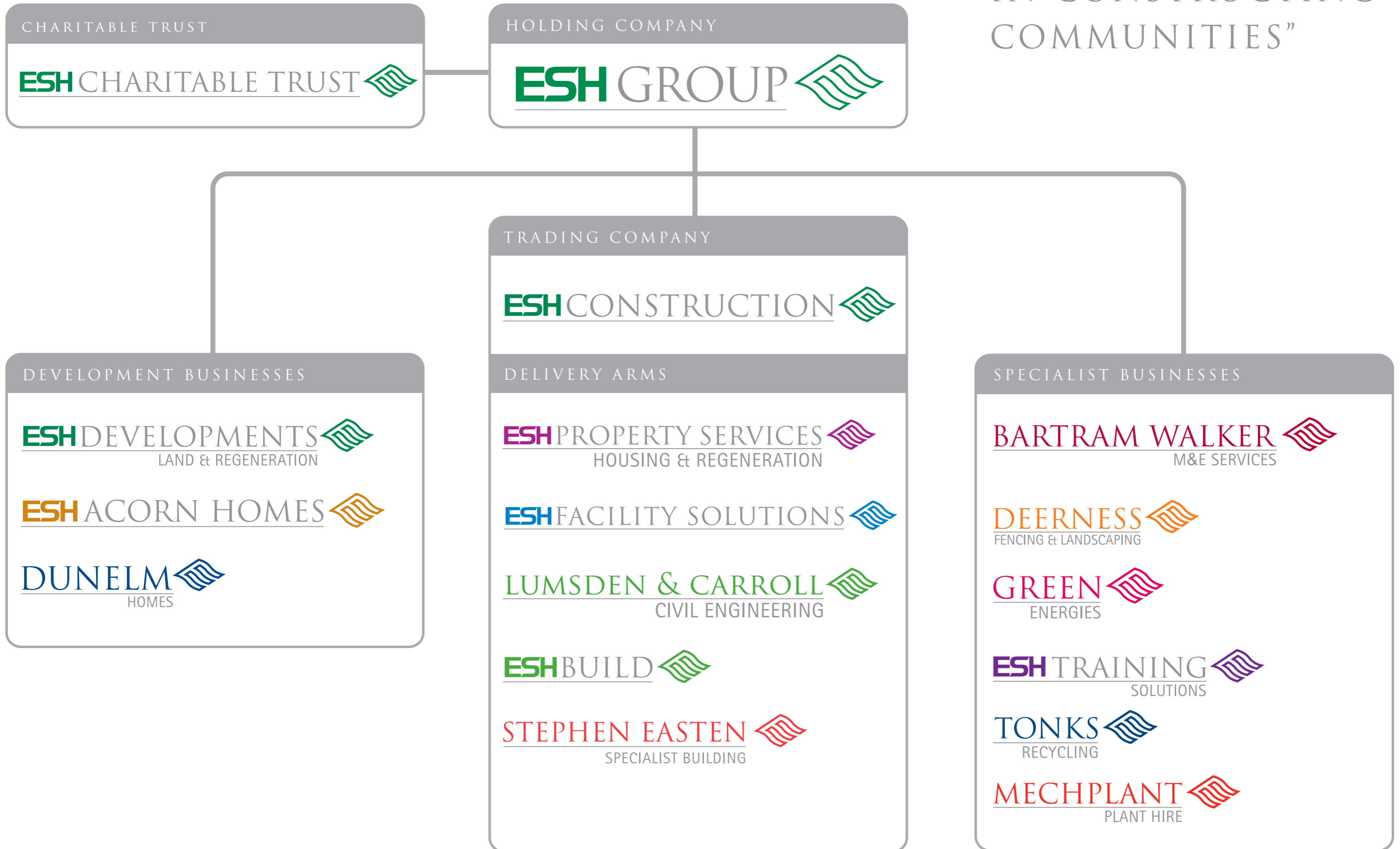


ALAN SHEARER CENTRE

The project involved the landscaping design and build for the new Alan Shearer Centre, Newcastle. The garden was designed around a jungle theme which included a sensory and edible garden, incorporating original features into the scheme. The installation process began with tree removal and shaping of existing planting, leading on to site clearance and groundwork. The design of the garden had to meet a number of key requirements such as the installation of footpaths, hard standing areas and raised sensory planting beds to allow wheelchair access. We also installed a water feature and an elevated jungle walk to complete the transformation.

PROJECTS

“LEADING THE WAY
IN CONSTRUCTING
COMMUNITIES”



DEERNESS

FENCING & LANDSCAPING



Deerness Fencing & Landscaping

Esh House, Bowburn North Industrial Estate, Durham, DH6 5PF

T: 0191 377 4630

F: 0191 377 4631

www.deernessfencing.co.uk

enquiries@deernessfencing.co.uk

